



# Posadas de España



## YOUR HOTEL IN MÁLAGA



Posadas de España Malaga is located in one of Spain's most advanced technological parks, "Parque Tecnológico de Andalucía (PTA)", just a few minutes from the city and the Costa del Sol resorts and beaches:

- 10 minutes from the center of Malaga.
- 5 minutes from Pablo Picasso International Airport.
- 5 minutes from Conference and Exhibition Center.
- 5 minutes from University of Malaga.
- 15 minutes from some of the most famous Costa del Sol beaches and golf courses.



C/ Graham Bell, 4. Parque Tecnológico de Andalucía. 29590 Campanillas - MÁLAGA

Tfno. (34) 95 123 30 00 Fax. (34) 95 123 30 01 [hotelmálaga@posadasdeespana.com](mailto:hotelmálaga@posadasdeespana.com) [www.posadasdeespana.com](http://www.posadasdeespana.com)



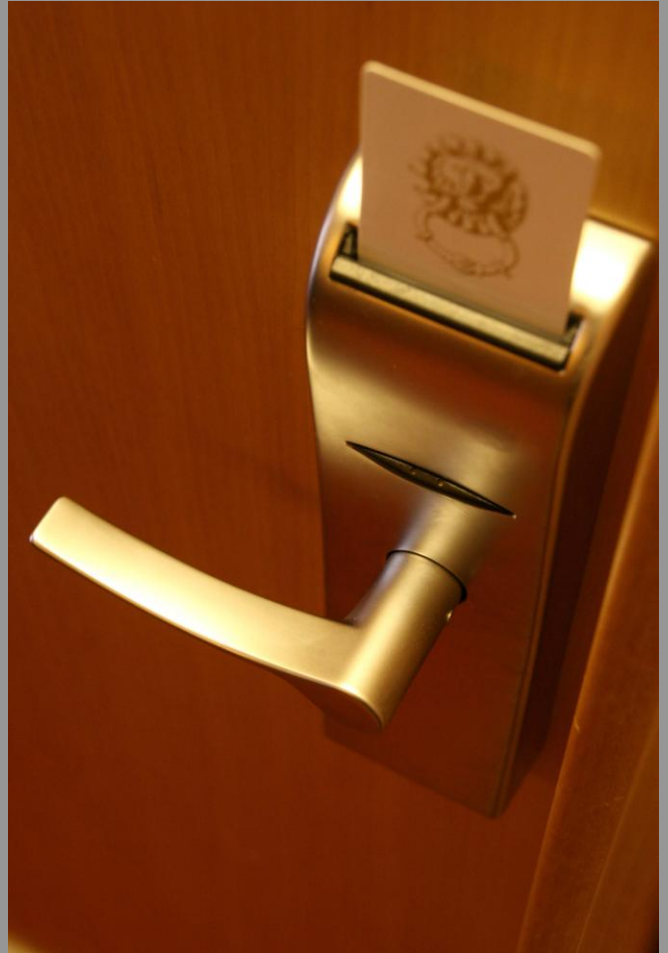
# Posadas de España



## OUR ROOMS



Distributed in 3 floors, the Hotel has 92 rooms, all exterior, equipped with complete bathroom with glass shower screen and hair dryer, individual air conditioning, wooden floors, ample work desktop, direct dial phone, safe large enough for laptop, minibar, free Internet Wi-Fi connection and TV with digital platform. Although, we offer interconnected and non smoking rooms, and rooms with terrace.



C/ Graham Bell, 4. Parque Tecnológico de Andalucía. 29590 Campanillas - MÁLAGA

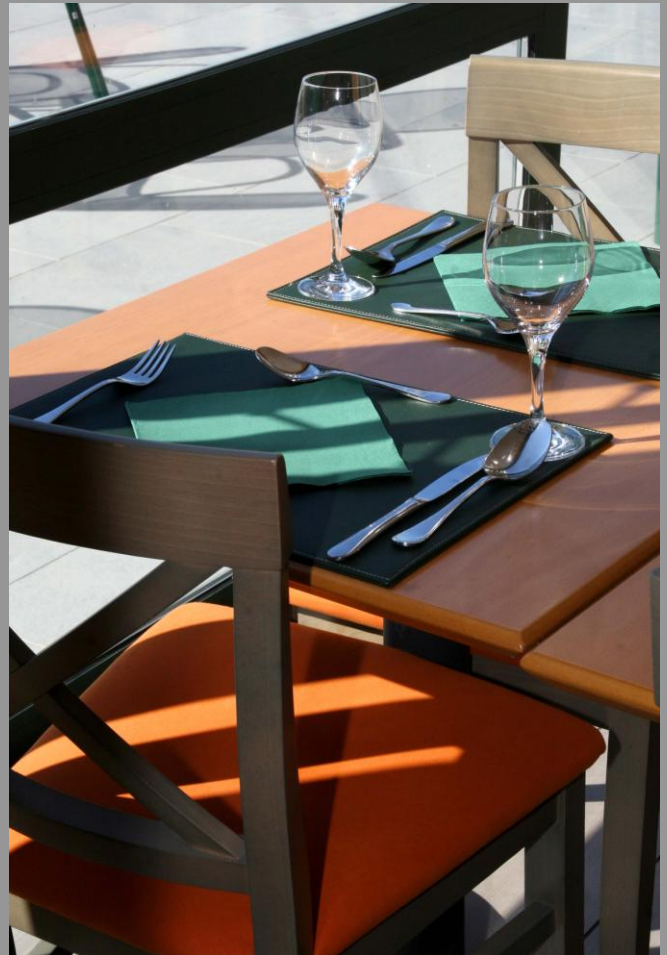
Tfno. (34) 95 123 30 00 Fax. (34) 95 123 30 01 [hotelmálaga@posadasdeespana.com](mailto:hotelmálaga@posadasdeespana.com) [www.posadasdeespana.com](http://www.posadasdeespana.com)



# Posadas de España



## RESTAURANT SERVICES

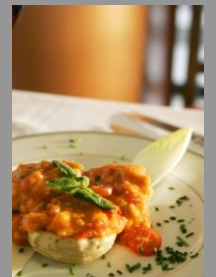
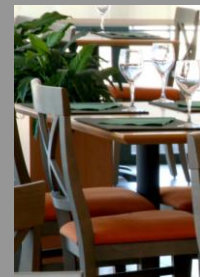


In **Posadas de España** we offer you a friendly restaurant service adjusted to our client's schedules.

The breakfast buffet service offers you a wide choice of sweet rolls and breads, deli meats, cheeses, fruit, juices, cereal and hot dishes that will help you to start the day full of energy.

A select daily menu is served at lunch and at dinner you can also choose "a la carte" or take the chef's recommendations.

Our offer is completed by a friendly bar where you can rest after work or talk with friends while you enjoy a cup of coffee.



C/ Graham Bell, 4. Parque Tecnológico de Andalucía. 29590 Campanillas - MÁLAGA

Tfno. (34) 95 123 30 00 Fax. (34) 95 123 30 01 [hotelmálaga@posadasdeespana.com](mailto:hotelmálaga@posadasdeespana.com) [www.posadasdeespana.com](http://www.posadasdeespana.com)



# Posadas de España



## MEETING ROOMS



In **Posadas de España** we want your business meetings and social events to be successful.

We offer you 2 function rooms with natural light, equipped with the latest technology to satisfy your needs.



C/ Graham Bell, 4. Parque Tecnológico de Andalucía. 29590 Campanillas - MÁLAGA

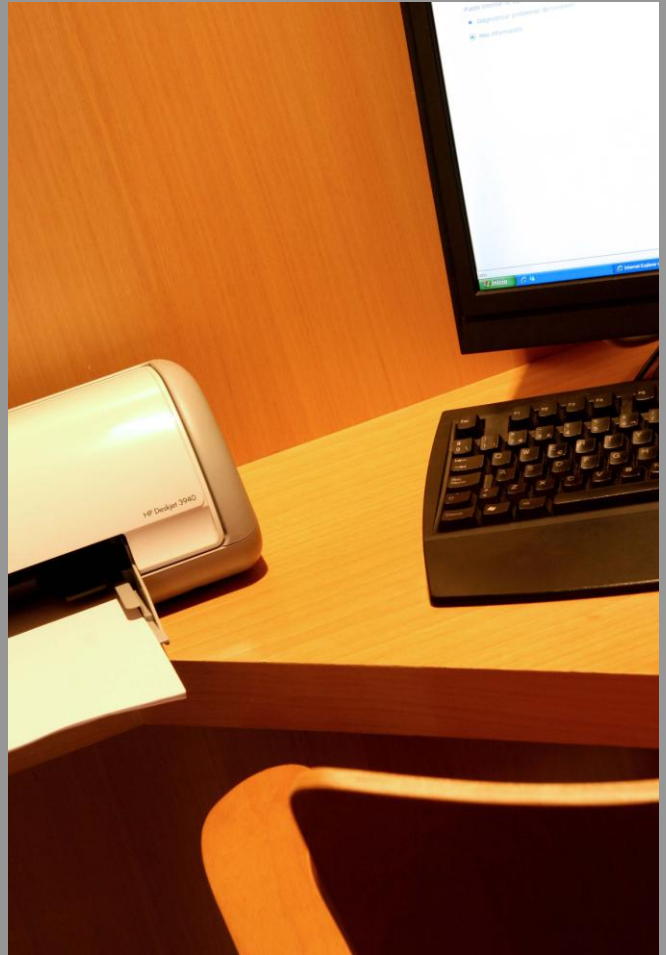
Tfno. (34) 95 123 30 00 Fax. (34) 95 123 30 01 [hotelmalaga@posadasdeespana.com](mailto:hotelmalaga@posadasdeespana.com) [www.posadasdeespana.com](http://www.posadasdeespana.com)



# Posadas de España



## ADDITIONAL SERVICES



**Business Point:** We put at your disposal 2 computers with high Internet connection and printers.

**Internet Wi-Fi:** Free Internet Wi-Fi connection in rooms and public areas.

**Swimming Pool:** The hotel has an exterior swimming pool with solarium where you can relax after a working day.

**Clients parking:** Free clients parking with assured availability.



C/ Graham Bell, 4. Parque Tecnológico de Andalucía. 29590 Campanillas - MÁLAGA

Tfno. (34) 95 123 30 00 Fax. (34) 95 123 30 01 [hotelmálaga@posadasdeespana.com](mailto:hotelmálaga@posadasdeespana.com) [www.posadasdeespana.com](http://www.posadasdeespana.com)



# Posadas de España



## HOW TO GET TO THE HOTEL

### From Pablo Picasso Airport:

Get out of the airport and take the Comandante García Morato Avenue. Take the N-340 in the direction of Malaga. Take the exit to the A-7 motorway, take exit 238<sup>a</sup> in the direction of the PTA-Universidad until you reach the A-357. In the A-357, take exit 61 in the direction of the PTA (Parque Tecnológico de Andalucía). In the roundabout, take the second street on your right (Graham Bell) where the hotel is located.

### From Malaga Rail Station:

Get out of the station and take Avda. de Andalucía in the direction of the A-357 – Campanillas. Once in the A-7 motorway take exit 238 A in the direction of the PTA-Universidad until you reach the A-357. In the A-357, take exit 61 in the direction of the PTA (Parque Tecnológico de Andalucía). In the roundabout, take the second street on your right (Graham Bell) where the hotel is located.

### From Cádiz:

In the A-7 motorway that connects Cádiz and Málaga, take exit 238 A in the direction of the PTA-Universidad until you reach the A-357. In the A-357 take exit 61 in the direction of the PTA (Parque Tecnológico de Andalucía). In the roundabout, take the second street on your right (Graham Bell) where the hotel is located.

### From Madrid:

From the A-45 motorway take exit 166 to the A-7 motorway in the direction of Torremolinos-Algeciras-Cádiz. Once in the A-7 motorway take exit 238 A in the direction of the PTA-Universidad until you reach the A-357. In the A-357 take exit 61 in the direction of the PTA (Parque Tecnológico de Andalucía). In the roundabout, take the second street on your right (Graham Bell) where the hotel is located.

### From Almería:

In the A-7 motorway that connects Almería and Málaga, take exit 238 A in the direction of PTA-Universidad until you reach the A-357. In the A-357 take exit 61 in the direction of the PTA (Parque Tecnológico de Andalucía). In the roundabout, take the second street on your right (Graham Bell) where the hotel is located.



C/ Graham Bell, 4. Parque Tecnológico de Andalucía. 29590 Campanillas - MÁLAGA

Tfno. (34) 95 123 30 00 Fax. (34) 95 123 30 01 hotelmalaga@posadasdeespana.com www.posadasdeespana.com